

ENDURA PRO

LED VAPOR TIGHT STRIP

Catalog#	
Project:	
Fixture Type:	Date:
Note:	

Hit the Tab key or mouse over the page to see all interactive elements.

The Endura Pro LED Vapor Tight Strip is an energy-saving, environmentally friendly luminaire designed for longevity. With its corrosion-resistant and impact-proof construction, the surface-mountable waterproof fixture features a PC housing and opal finish cover, making it ideal for wet locations for a long lifespan. Additionally, the product offers the convenience of adjusting CCT and wattage settings through a slide switch on the driver.

FEATURES & BENEFITS

- Delivers high efficacy with 4' light providing upto 6,240 lumens.
- Selectable CCT and Wattage, and dimming capabilities for optimal customization.
- UL Listed, DLC certified, suitable for dry and wet location use.
- Operating Temperature: -20°C to +35°C
- Rated for 50,000 hours, offering a 5 year warranty.



Model Number	Wattage	Lumens	Efficacy
HL-VT-MW-MCCT-48W-4 Feet	36W/42W/48W	6,240lm	130 lm/W

4' model feature selectable CCT options: 3000K/4000K/5000K

PRODUCT SUMMARY

Efficacy 130 lm/W	Dimming 0-10V standard
CCT Options 3000K / 4000K / 5000K	Operating Temp. -20°C to +35°C
CRI ≥80	Warranty 5 Years
Beam Angle 110°	Finish Grey
Input Voltage 120-277Vac	Mounting Surface & Suspended
Power Factor (PF) 0.95	Housing Material Polly Carbonate
THD ≤20%	Lens Type No Lens

OPTIONAL ACCESSORY

- Remote Emergency Battery Backup (HL-EM-06-01-1).

APPLICATIONS

- Battery rooms, Chilling plants, Underground parkings, Garage, Freezers, Coolers and Outdoor Under Canopy.

Default Parameters	
Wattage	CCT
48W	5000K

DLC PRODUCT INFORMATION			
Order ID	DLC Model Number	DLC Source Identifier	Classification
HL-VT-MW-MCCT-48W-4 Feet	ENDURA PRO LED BATTEN 4FT 48W SWSC IP65D	S-JV0Z1C	Premium

PERFORMANCE

Model Number	Wattages	Input Current	3000K (≥80 CRI)		4000K (≥80 CRI)		5000K (≥80 CRI)	
			Lumens	Efficacy	Lumens	Efficacy	Lumens	Efficacy
HL-VT-MW-MCCT-48W-4 Feet	36W/42W/48W	0.315A/0.369A/0.421A	4,680lm	130 lm/W	5,460lm	130 lm/W	6,240lm	130 lm/W

Lumen and efficacy data are based on the CCT of each higher wattage SKU.

PACKAGING DETAILS

Model No.	Product Dimension (in) (LxWxH)	Case Qty (units)	Case Dimension (in) (LxWxH)	Net Weight Product (lbs)	Gross Weight with Packaging (lbs)
HL-VT-MW-MCCT-48W-4 Feet	47.2x4.8x3.1	4	48.2x12.2x11.2	3.9	17.8

*Boxes/Pallet-1 Box = 6Pcs

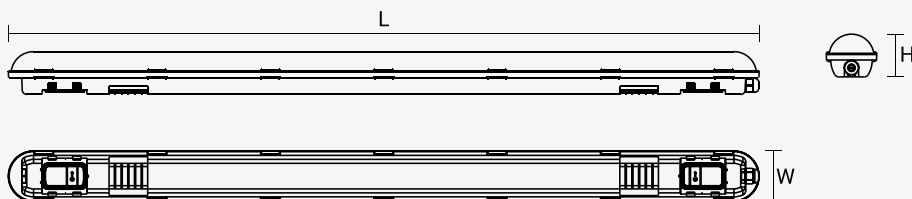
ACCESSORIE (SOLD SEPARATELY)



Emergency
Battery Backup 10W
(HL-EM-06-01-1)

DIMENSIONS

SELECTABLE POWER & CCT: 4FT



Length (L)

23.6 inch

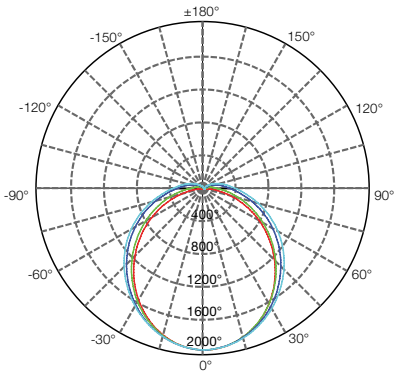
Width (H)

4.8 inch

Height (H)

3.1 inch

PHOTOMETRIC RESULT



V2.1

Last Updated: March 16, 2026 11:00 AM