

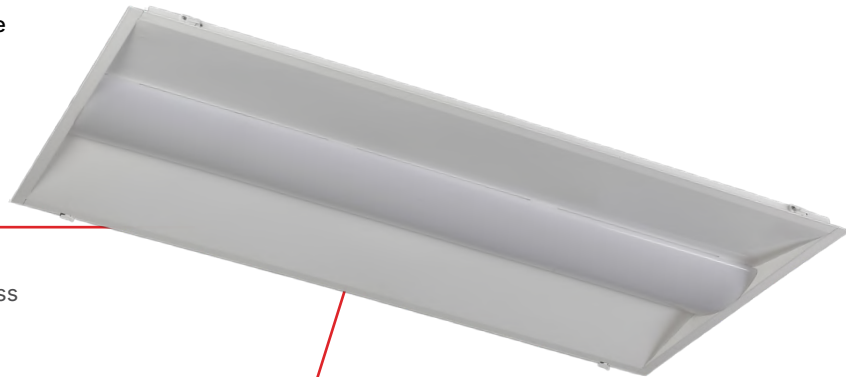
RAPID RETRO

TROFFER DOOR

Catalog#	
Project:	
Fixture Type:	Date:
Note:	

Hit the Tab key or mouse over the page to see all interactive elements.

Rapid Retro Troffer Door is a versatile LED luminaire designed for commercial retrofit and new construction projects. With selectable wattage, multiple CCT options, and 0-10V dimming, it delivers high efficiency and reliable performance. Optional surface mount kits are available for 2x4, and 2x2 fixtures, allowing installation in spaces where recessed mounting is not possible while maintaining a clean, low-profile appearance.



FEATURES & BENEFITS

- Offers up to 5,205lm in the 2x4 model for superior brightness
- Adjustable CCT and wattage allow precise lighting control
- Equipped with 0-10V dimming for smooth control
- Rated for 50,000 hours, offering a 5-year warranty
- Surface mounting option available



SURFACE MOUNT OPTION

Optional surface mount kits allow installation of Rapid Retro Panel Door fixtures in ceilings where recessed mounting is not possible.

Available Sizes: 2x4 | 2x2

Model Number	Wattage	Lumens	Efficacy
HL-2X4-MW-MCCT-50W-Retro Troffer	30W/40W/50W	5,205lm	127.6 lm/W
HL-2X2-MW-MCCT-40W-Retro Troffer**	20W/30W/40W	5,205lm	127.6 lm/W

All models feature selectable CCT options: 3500K/4000K/5000K
 ** marked SKU is Make to Order

PRODUCT SUMMARY

Efficacy 127.6 lm/W	Beam Angle 115°	THD <20	Warranty 5 Years	Housing Material CRCA
CCT (Selectable) 3500/4000/5000K	Input Voltage 120-277 Vac	Dimming 0-10V standard	Finish White	Lens Type Diffuser
CRI 80	Power Factor (PF) >0.9	Operating Temp. -20°C to +40°C	Mounting Recessed & Surface	

APPLICATIONS

- Commercial Offices, Schools & Educational Facilities, Healthcare Environments, Retail Spaces and Retrofit Projects.

ACCESSORIES (SOLD SEPARATELY)

- Remote Emergency Battery Backup, Motion Sensor, 2X4 Surface Mount Kit, and 2x2 Surface Mount Kit.

Default Parameters	
Wattage	CCT
50W	5000K
40W	5000K

DLC PRODUCT INFORMATION			
Order ID	DLC Model Number	DLC Source Identifier	Classification
HL-2X4-MW-MCCT-50W-Retro Troffer	-	In Progress	Premium
HL-2X2-MW-MCCT-40W-Retro Troffer**	-	In Progress	Premium

PERFORMANCE

Model Number	Wattages	Input Current	3500K (80 CRI)		4000K (80 CRI)		5000K (80 CRI)	
			Lumens	Efficacy	Lumens	Efficacy	Lumens	Efficacy
HL-2X4-MW-MCCT-50W-Retro Troffer	30W	0.46A	3,549.0lm	129.9 lm/W	4,688.2lm	126.8 lm/W	5,236.0lm	121.7 lm/W
	40W		3,567.0lm	134.0 lm/W	4,766.0lm	132.1 lm/W	5,205.0lm	127.6 lm/W
	50W		3,628.2lm	132.0 lm/W	4,733.8lm	128.7 lm/W	5,182.0lm	124.2 lm/W

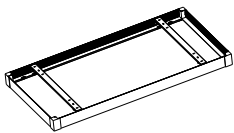
TROFFER DOOR PACKAGING DETAILS

Model No.	Product Dimension (LxWxH) (in)	Case Qty (units)	Case Dimension (LxWxH) (in)	Net Weight Product (lbs)	Gross Weight with Packaging (lbs)	Pallet Load
HL-2X4-MW-MCCT-50W-Retro Panel	46.62X22.80X2.29	2	46.62X22.80X2.29	21.16	26.45	-

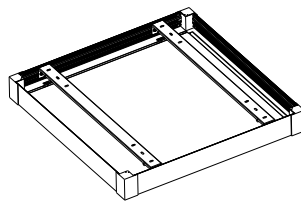
SURFACE MOUNTING KIT PACKAGING DETAILS

Model No.	Surface Mounting Kit Dimension (LxWxH) (in)	Case Qty (units)	Case Dimension (LxWxH) (in)	Net Weight Product (lbs)	Gross Weight with Packaging (lbs)	Pallet Load
HL-RRP-Retro Troffer-2X4 Surface Kit	48.00x24.20x3.0	10	48.78x18.11x9.57	6.75	72.10	-
HL-RRP-Retro Troffer-2X2 Surface Kit	25.40x25.40x3.0	10	25.98x17.91x10.35	4.98	52.85	-

ACCESSORIES (SOLD SEPARATELY)



2x4 Surface Mount Kit
(HL-RRP-Retro Troffer - 2x4 Surface Kit)



2x2 Surface Mount Kit
(HL-RRP-Retro Troffer - 2x2 Surface Kit)



Remote Emergency Battery Backup
(HL-EM-02-01-1)

PRODUCT DIMENSIONS

SELECTABLE WATTAGE & CCT: 50W (2X4)

Length (L)	Width (B)	Height (H)
47.7 inch	23.7 Inch	1.4 Inch

SELECTABLE WATTAGE & CCT: 40W (2X2)**

Length (L)	Width (B)	Height (H)
23.7 inch	23.7 Inch	1.4 Inch

** marked SKU is Make to Order

SURFACE MOUNTING KIT DIMENSIONS

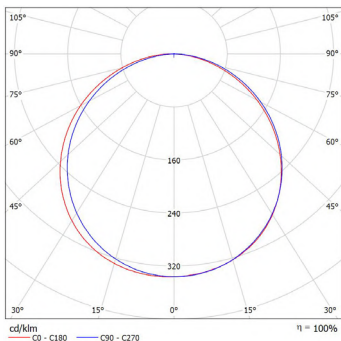
HL-RRP-RETRO TROFFER-2X4 SURFACE KIT

Length (L)	Width (W)	Height (H)
46.61 inch	23.22 Inch	3.0 Inch

HL-RRP-RETRO TROFFER-2X2 SURFACE KIT

Length (L)	Width (W)	Height (H)
47.96 inch	12.56 Inch	2.1 Inch

PHOTOMETRIC RESULT



Version 1
Last Updated: April 23, 2026 11:00 AM