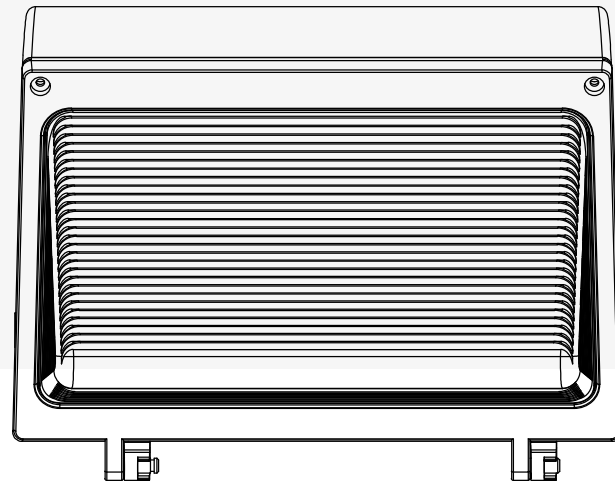


# INSTALLATION GUIDE

## *Hexa* Half Cut Wallpack



### **IMPORTANT:**

1. The luminaire must be installed by qualified this product must be installed in accordance with the applicable installation code by a person familiar with the construction and operation of the product and the hazards involved.

### **RISK OF ELECTRIC SHOCK & PERSONAL INJURY:**

1. Disconnect power at fuse or circuit breaker before installing or servicing.
2. Fixture may become damaged and/or unstable if not installed properly. Tighten all fixture components to their recommended torque values.

### **WARNING:**

1. Make certain power is OFF before starting installation or attempting any maintenance.
2. This control circuit is not isolated – see installation instructions.

### **INSTALLATION:**

#### ***Unpacking***

This luminaries has been properly packed, should be no part damaged during The transit. Inspect after open the package to confirm any thing missing or damaged.

#### ***Handling***

Damage may occur if luminaries is improperly handled outside of pack. Do not impact or stack luminaries after removal from packaging.

#### ***Dusk-to-dawn Operation (Optional)***

Sensor automatically turns the light on at dusk and off at dawn. Ensure the sensor is unobstructed.

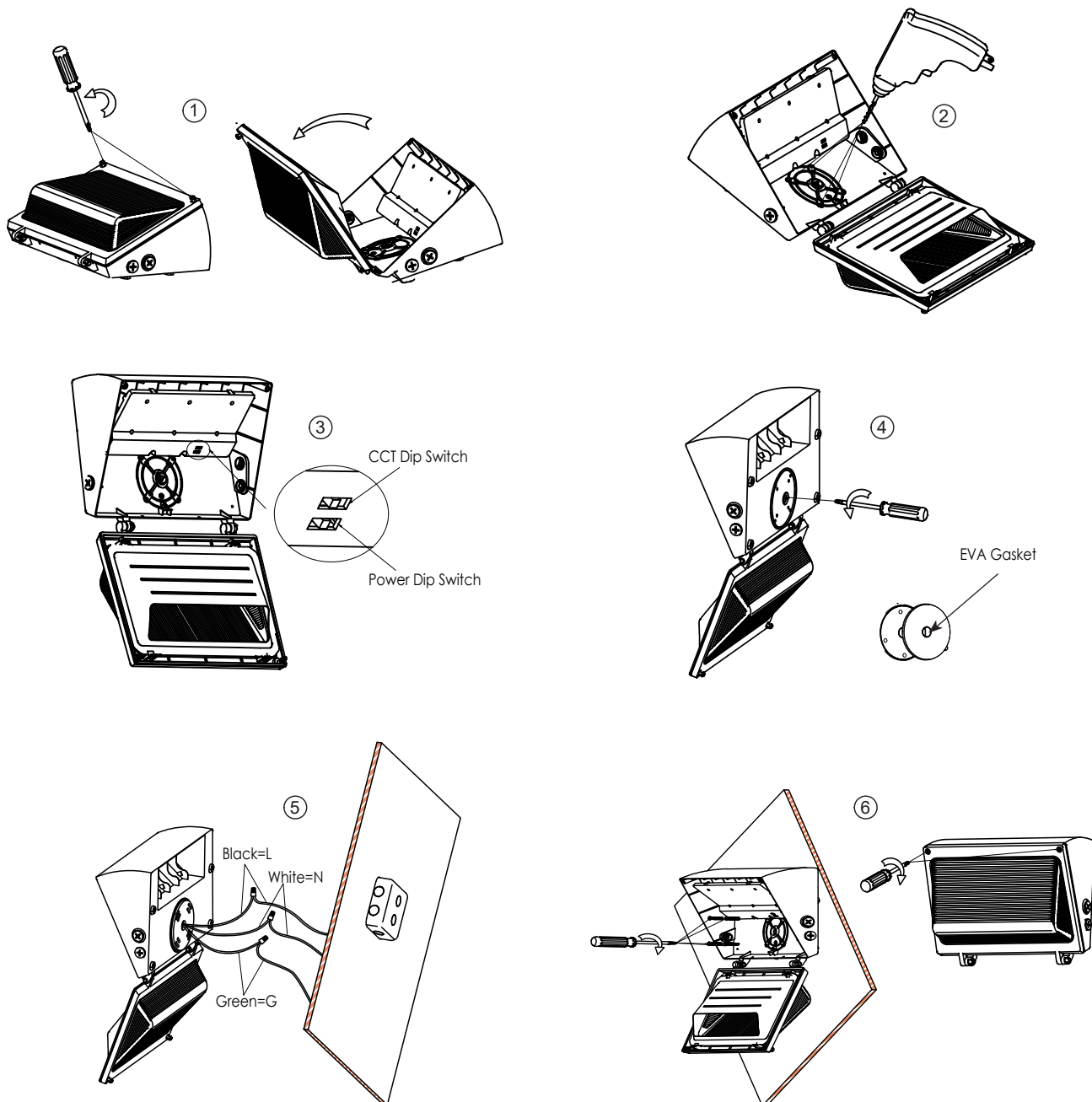
\*Pictures and diagrams in this IM are for illustrative purpose only.

# INSTALLATION GUIDELINE

## HEXA HALF CUT WALLPACK INSTALLATION GUIDELINE

### 1. JUNCTION BOX MOUNTING

1. Open the fixture by loosening screws on the front cover (figure 1).
2. Drill appropriate mounting holes at the back plate (figure 2).
3. Select the desired light output and color temperature using the Power & CCT DIP switch (figure 3).
4. Remove the center plug on the back plate. Stick EVA gasket on it for a weather-tight seal (figure 4).
5. Finish wiring (Black for Line, White for Neutral and Green for Ground) (figure 5).
6. Mount the fixture by securing mounting screws through the drilled holes. Close the fixture by tightening screws (figure 6).



\*Pictures and diagrams in this IM are for illustrative purpose only.

# INSTALLATION GUIDELINE

---

## HEXA HALF CUT WALLPACK INSTALLATION GUIDELINE

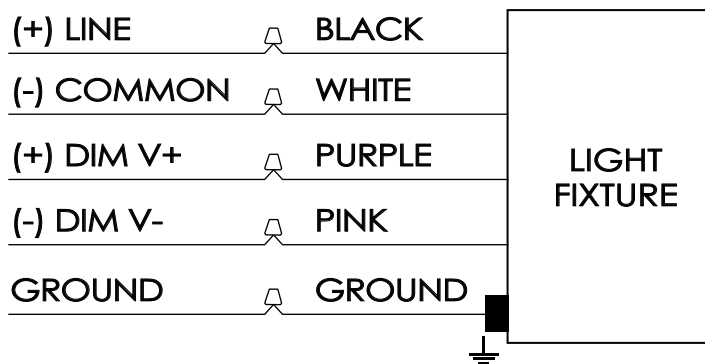
### 2. WALL MOUNTING

1. Open the fixture by loosening screws on the front cover.
2. Remove the 1/2" plug from where you intend to feed conduit.
3. Drilling out holes on back plate to secure fixture on the wall with proper screws.
4. Finish wiring (Black for Line, White for Neutral and Green for Ground).
5. Close the fixture by tightening screws.

### 0-10V DIMMING WIRING

The driver comes with dimmable leads for connecting to a 0-10V dimmer switch. Follow the wiring directions.

1. Connect the black fixture lead to the (+) LINE supply lead.
2. Connect the white fixture lead to the (-) COMMON supply lead.
3. Connect the GROUND wire from fixture to supply ground. Do NOT connect the GROUND of the dimming fixture to the output.
4. Connect the purple fixture lead to the (V+) DIM lead.
5. Connect the pink fixture lead to the (V-) DIM lead.
6. If unused, make sure the leads are properly capped.



\*Pictures and diagrams in this IM are for illustrative purpose only.